

# CABINET LASER SETUP IN COREL

NEWSCHOOL OF ARCHITECTURE + DESIGN  
MATERIALS LAB

MAY, 2014

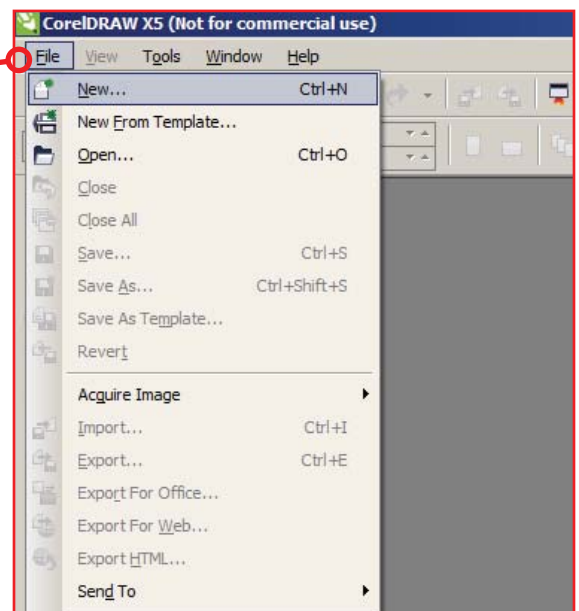
# OVERVIEW

This guide will review the correct process for using Corel Draw to prepare a file for laser cutting. This includes importing, setup, line weight, colors and printing. From there, the guide covers operating the ULS control panel for the VLS 6.60 laser

---

## OPEN A NEW FILE

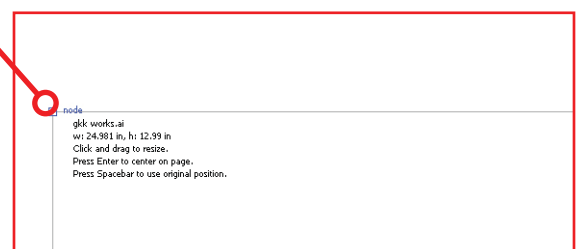
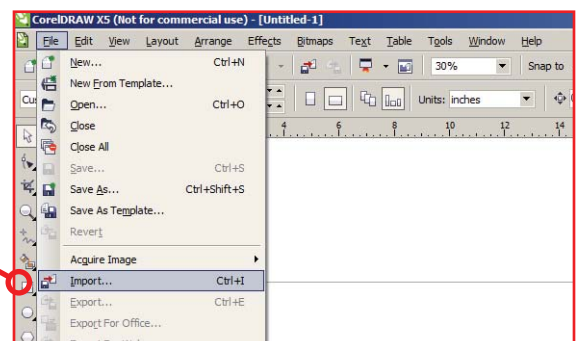
- Open Corel Draw
- Click 'File' at the top left corner
- Select 'New'



---

## IMPORT THE FILE

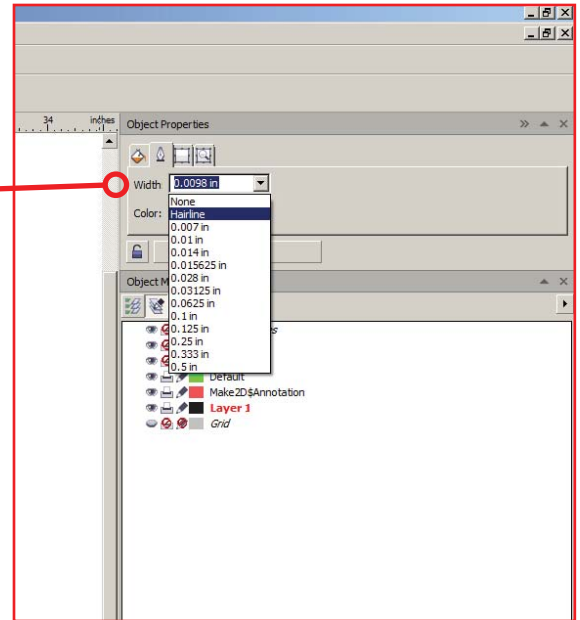
- Click on 'File'
- Select 'Import' from the drop-down menu
- Select the top left corner of the template layout
- Make certain the file fits into the 18" x 32" layout



## SET LINE WIDTH

All lines must be set to hairline width for the laser cutter

- Select all lines in the file
- Go to the object properties window
- Select 'Hairline' as the width
- Press 'Apply'

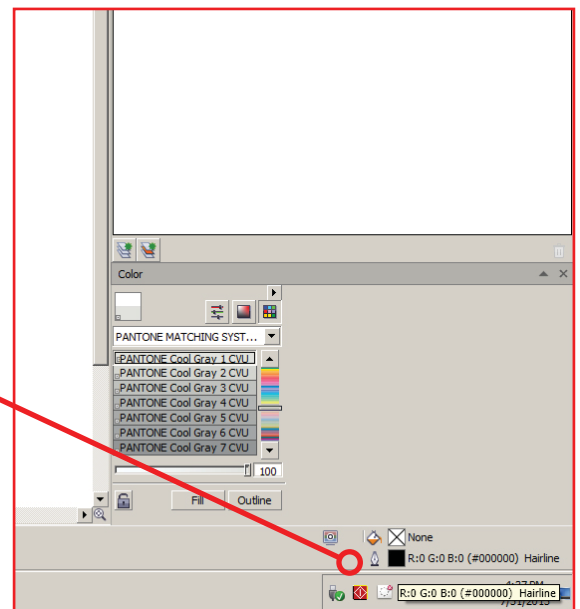


## DETERMINE LINE COLORS

The laser has three functions Cut, Etch, and Rasterize. Which function is determined by the color of the vector lines. All colors must be in an RGB format.

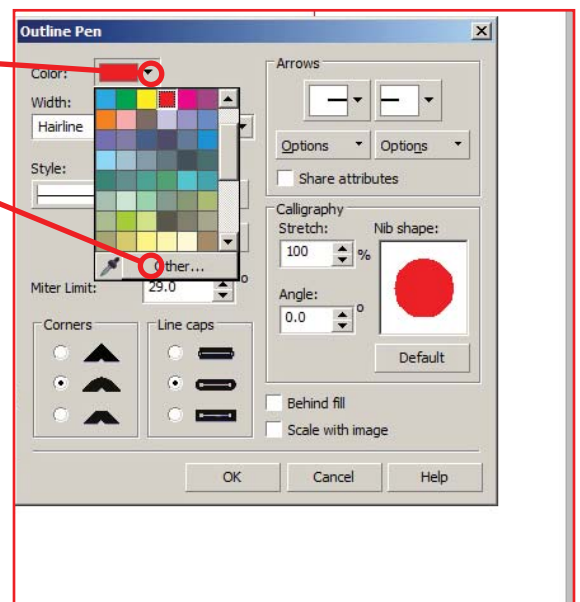
RED=Cut, BLUE=Etch, OTHER=Rasterize.

- Select all lines of one type
- Click on the color icon in the lower right corner



## CHOOSE THE COLOR FAMILY

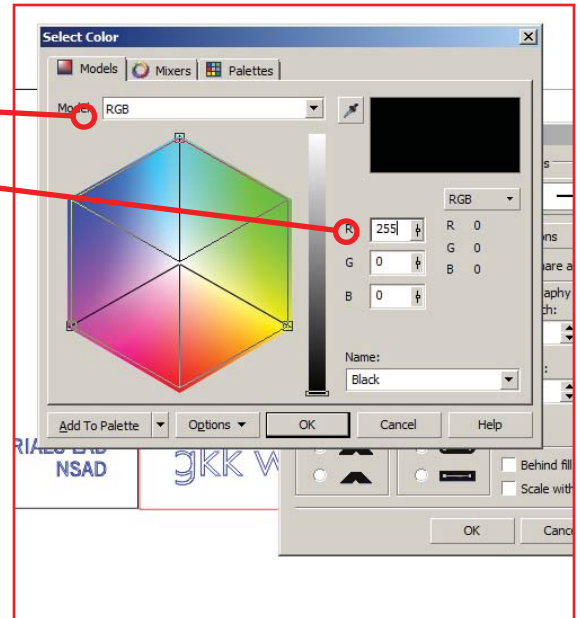
- From the options window select the down arrow for 'Color'
- At the bottom of the drop down select 'Other'



## SET THE COLOR TO RGB

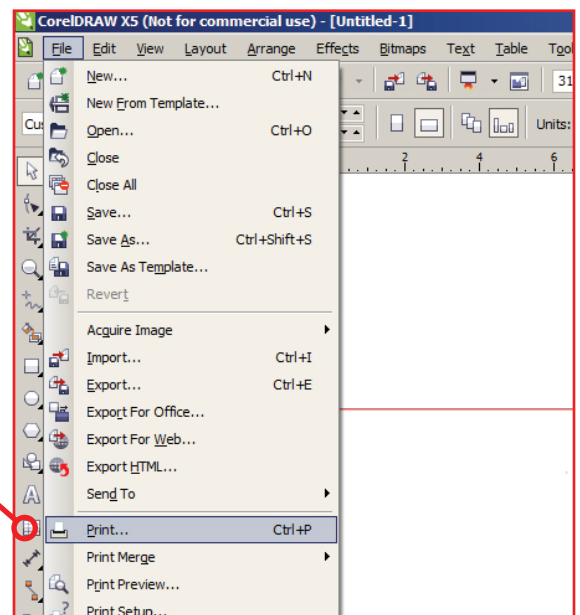
The 'Select Color' box should now appear

- Select 'RGB' from the 'Model' drop down menu
- For RED cut lines type R=255, G=0, B=0
- For BLUE etch lines type R=0, G=0, B=255



## PRINT THE FILE

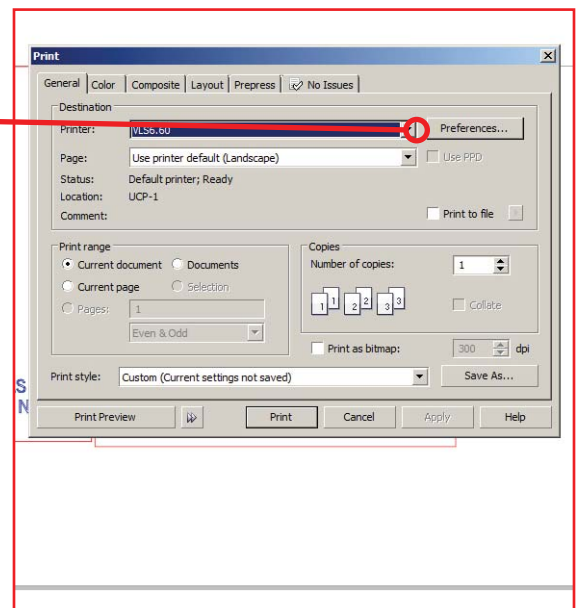
- Click on 'File'
- Select 'Print' from the menu



## SET THE PREFERENCES

The print window should now appear

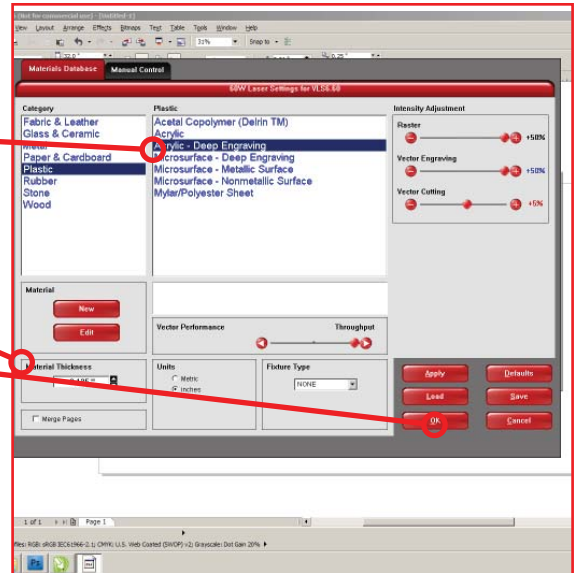
- Select 'VLS6.60' from the printer drop down window
- Select 'Preferences' from the menu



## DETERMINE THE MATERIAL TYPE

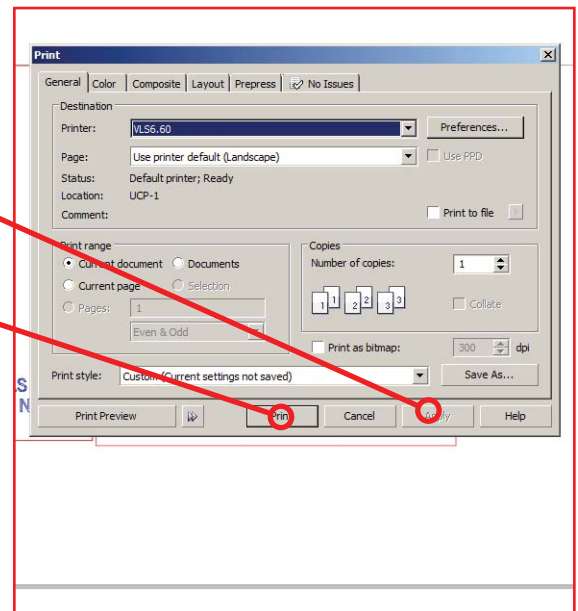
The VLS 6.60 dialog box should now appear

- Select your material type
- Measure your material thickness using the calipers
- Input the thickness in the setting box
- Select 'Apply'
- Select 'Ok'



## APPLY THE PREFERENCES

- Select 'Apply' in the Corel print menu
- Select 'Print'



## USING THE ULS CONTROL PANEL

- Select the small red icon in the lower corner of the screen
- The ULS control panel for the VLS 6.60 laser should appear

Now load your materials into the cabinet laser, make sure they lay flat to the cutting table

Turn on the PUREX air filtration unit before cutting

- Click the 'Power' icon in the top corner
- Select 'Play' to begin the file

