

CABINET LASER SETUP IN RHINO

NEWSCHOOL OF ARCHITECTURE + DESIGN
MATERIALS LAB

APRIL, 2014

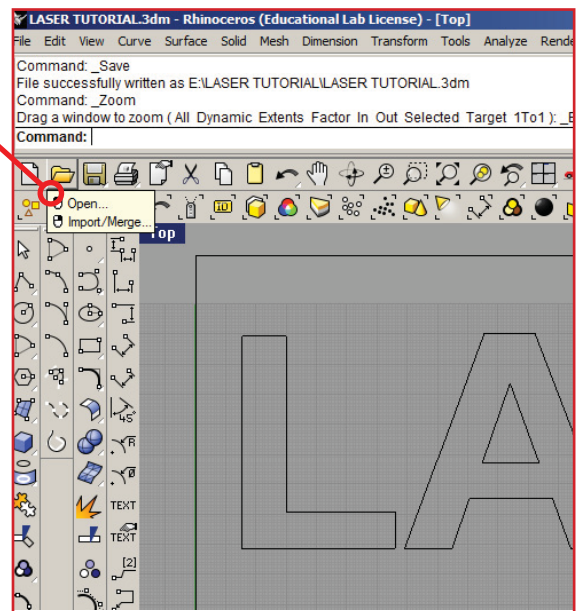
OVERVIEW

This guide will review the correct process for prepping a file from rhino for usage on a cabinet laser. This covers opening the file, setting to the origin, rescaling, layers and exporting. From there the file is ready for the laser cutter.

OPEN THE FILE

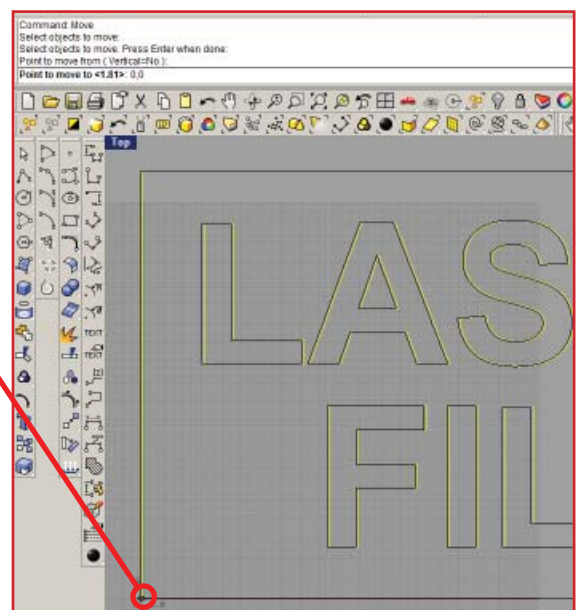
- Click 'File' at the top left corner and scroll down to 'Open'

All objects in the file must be 'polylines' in order to be cut or etched. If you are unsure, select everything you wish to cut/etch and type 'make2d' in the command prompt. This will generate a copy that is a line drawing. Delete the original and use the copy.



MOVE THE DRAWING TO THE ORIGIN

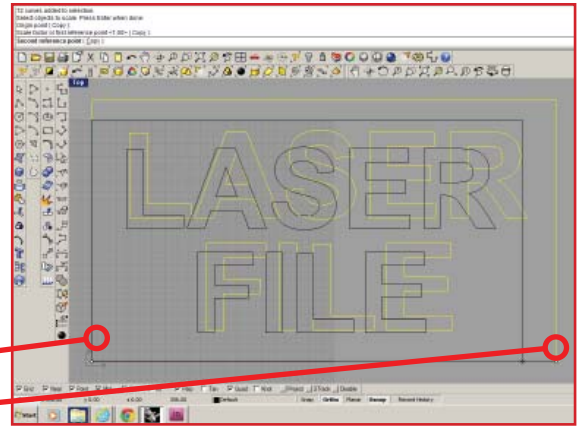
- Select all the lines of the drawing
- Type 'Move' at the text bar then press 'Enter'
- Select the lower-left corner of the lines as the point to move from
- Type in 0,0 as the point to move to then press 'Enter'



SCALE TO FIT ON LASER BED

The laser bed is 32" x 18", check if your file fits within that space.
If it does not, follow the next steps.

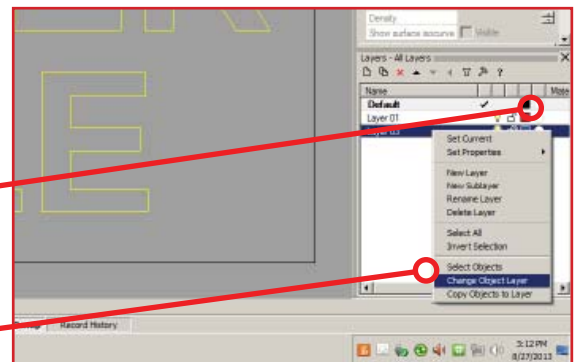
- Start a 32" line from the bottom left of your drawing
- Draw the line towards the lower right corner of your drawing
The end of this line will serve as your scale reference point
- Type 'Scale' in the text bar then press 'Enter'
- Select all your lines but not the scaling line, then press 'Enter'
- Select the corner at the (0,0) point as your origin
- Select the lower right corner as the first reference point
- Select the end of the scaling line as your second point
- The lines are now scaled to 32" wide



PUT THE LINES INTO THE PROPER LAYERS

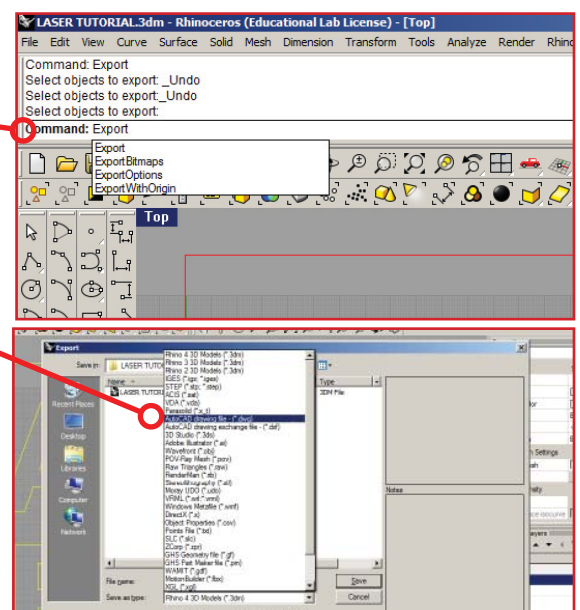
The laser has three functions Cut, Etch, and Rasterize. Which function is determined by the color of the vector lines. All colors must be in an RGB format. Red=Cut, Blue=Etch, Others=Rasterize.

- Create a layer for Cut, Etch and/or Rasterize as needed
- Set the layer color appropriately
- Select the lines destined to the same layer
- Right click the desired layer and select 'Change object layer'



EXPORT TO DXF OR DWG

- Type "Export" in the text bar
- Select all desired objects to export
- Press 'Enter'
- In the pop up menu type the name of the file
- Choose an appropriate file type (dxf or dwg)
- Press 'save'



You are now ready to laser